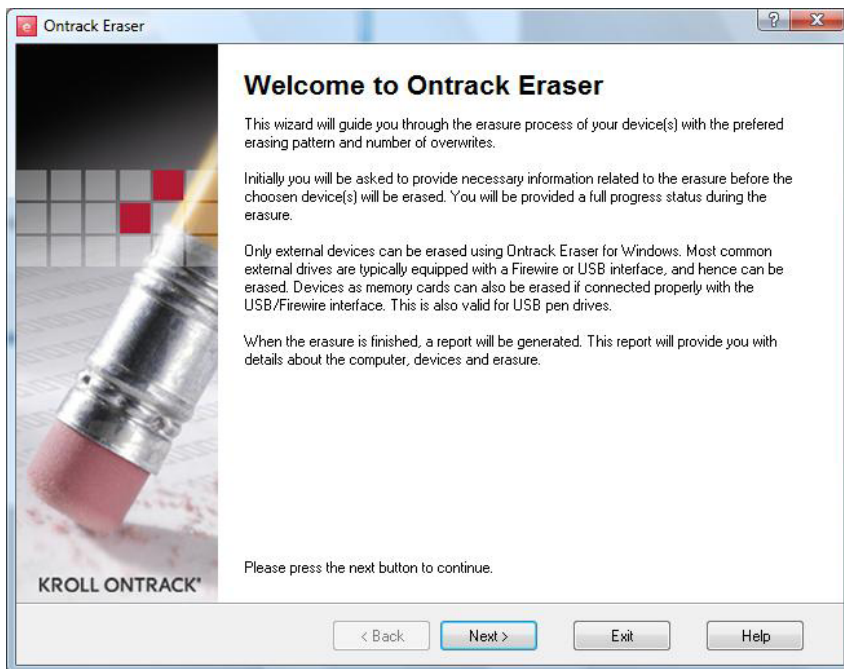
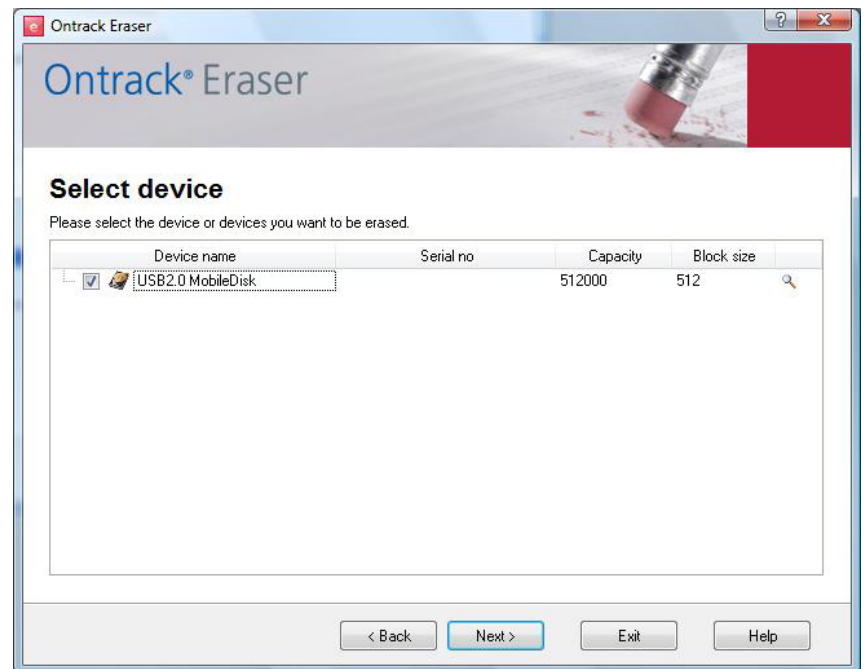


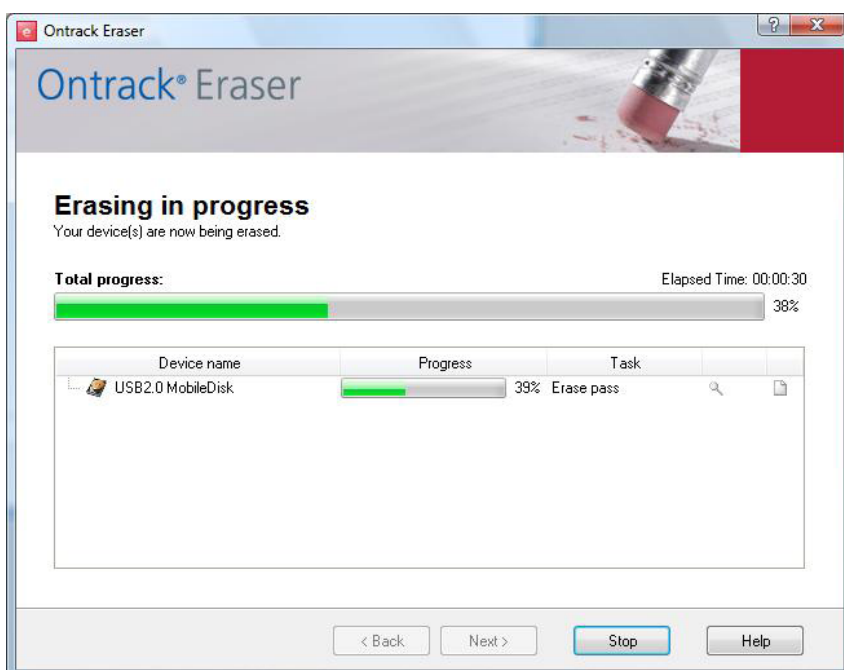
Ontrack Eraser – erasing with mobile dongle



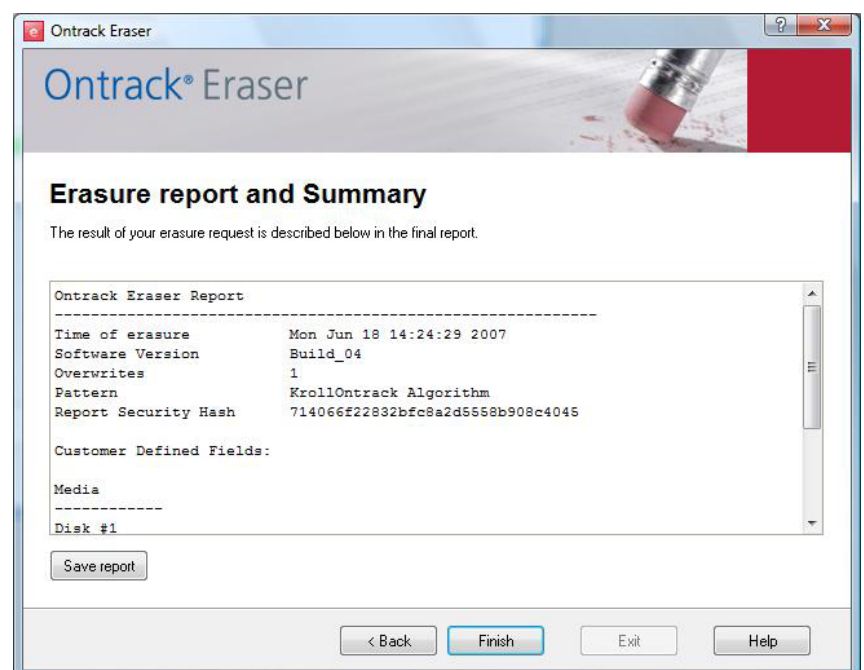
1. Insert the mobile dongle and turn on the PC
2. Press "Next" on the Welcome Page



3. On screen: Select Device
MARK: The internal hard drive is selectable. DO NOT choose this drive: Internal hard drive
4. Tag the square for which hard drive to erase.
5. Press "Next".
6. On screen you will see a summary page with the selected media you have selected for erase. If this is correct, press "Next".
7. Confirm erase on the pop-up screen.



You can follow the erasure process on screen. When the erasure process is completed you will see the Erase report and Summary on screen.



8. If the customer wants a report choose "Save report".
9. Save the report on the dongle and print the report