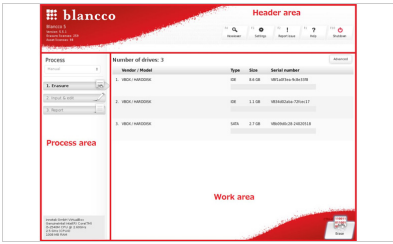


Blancco 5 Quick Guide



Header area

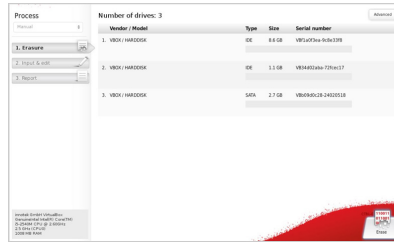
- » License information, Version, Function buttons

Process Area

- » Process steps

Work area

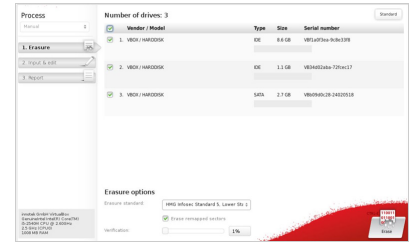
- » Process step related information, advanced button for changing erasure standard



Standard work area

- » Starting erase will erase all disks with pre-determined erasure standard

Clicking "advanced" button will change to advanced work area.

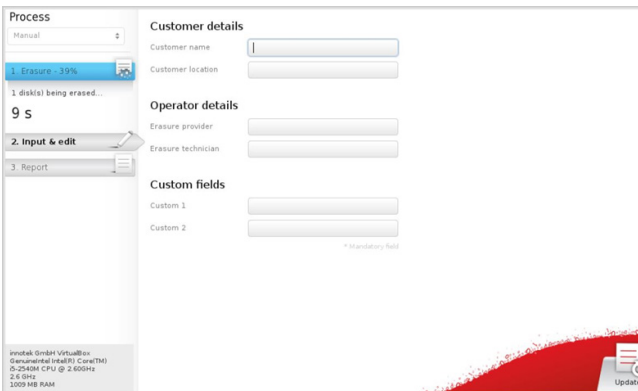


Advanced work area

- » Allows to choose disks to be erased
- » Allows changes erasure standard and verification

Clicking "standard" button will change back to standard work area.

Note: PC version will erase disks one after another, server version will erase all disks simultaneously.



Gray color

Task has not yet been initialized or is not active.

Green color

The task has been completed successfully.

Yellow color

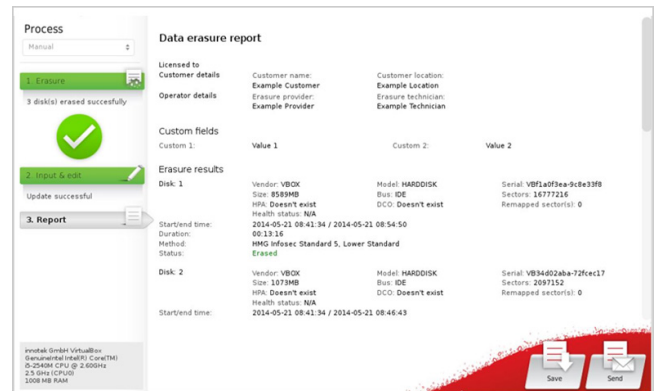
User action is required. Drive erasure is paused etc.

Red color

Task has failed.

Blue color

Process or given task is running.



Erasure report

- » remember to save and/or send report



Erasure process full screen screensaver



Erasure process complete screensaver



Erasure failed screensaver