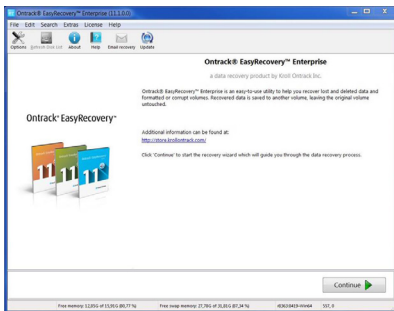
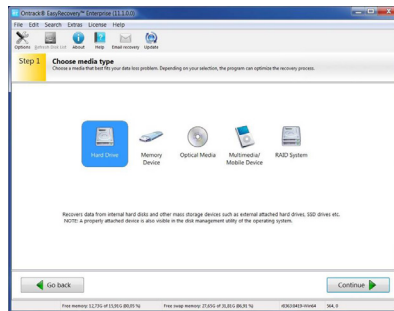


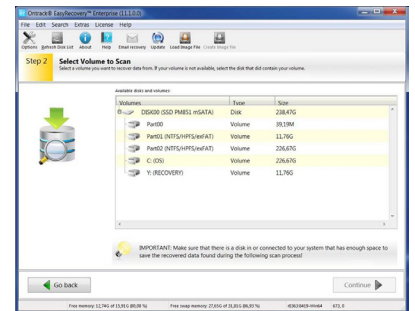
Easy Recovery Professional Quick Guide



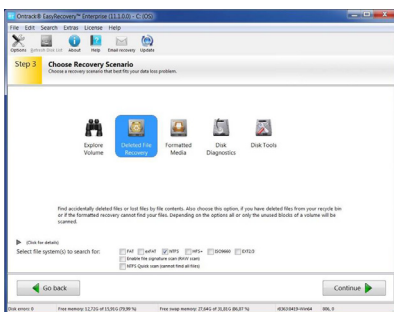
Startup screen shows the version.
Enterprise / Professional / Home



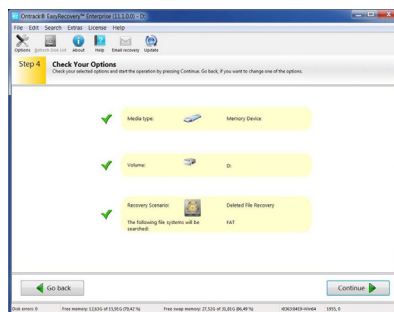
Step 1
Choose the media type to be recovered. After choosing the media type a description with additional information appears below it.



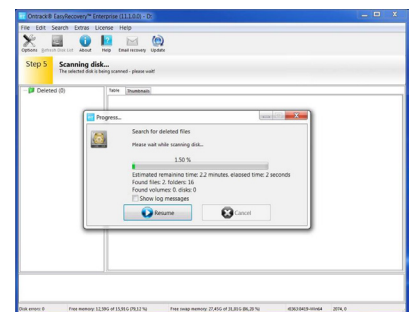
Step 2
Select volume to scan from the chosen media. Or a disk if volume is not available. See also the important tip.



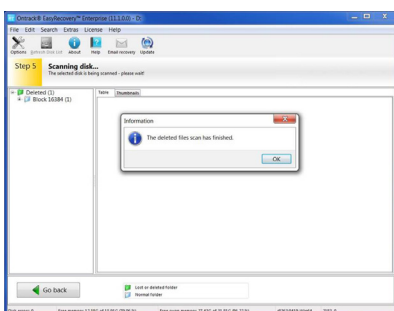
Step 3
Choose the scenario which is best related to the problem. Each scenario has a self-explanatory description. Select also the file system or systems for the scan on the bottom.



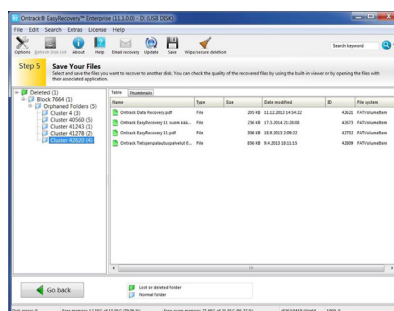
Step 4
Typical summary page of selected options. Shown before starting the selected process



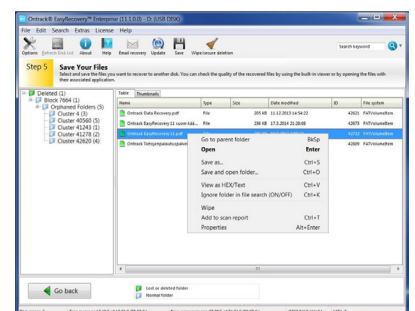
Step 5
Scanning of the files if the chosen recovery scenario was
 >> Explore Volume
 >> Deleted File Recovery
 >> Formatted Media



Step 6
Result of the scanning if the chosen recovery scenario was
 >> Explore Volume
 >> Deleted File Recovery
 >> Formatted Media



Step 7
Result of the scanning if the chosen recovery scenario was
 >> Explore Volume
 >> Deleted File Recovery
 >> Formatted Media
 List of the files and folders that are found



Step 8
Choose the action to be taken. Save the missed files and folders