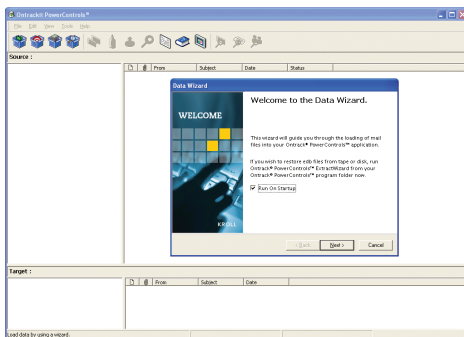


## Software for email recovery, restoration, search & analysis

Ontrack® PowerControls™ is a simple, yet powerful tool for copying, searching, recovering and analysing mailbox items directly from Microsoft® Exchange Server backups, (EDB) and Information Store files.

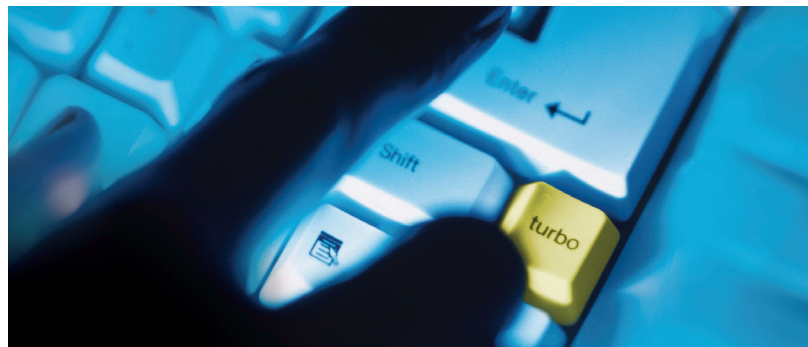
Let's face it, not every request to restore email files and messages is an emergency – you end up saying "no" more than you would like. Ontrack PowerControls will help you efficiently and effectively meet these requests, allowing you to easily extract from EDB files and Exchange backups.



Working directly with your existing Exchange backup architecture and procedures, Ontrack PowerControls quickly and easily restores message-level items from any

previous full backup. After all, a backup programme is really only as good as its ability to restore lost data. No more need for time consuming and expensive single mailbox or "brick-level" backups. Just perform a full backup of your Exchange server and let Ontrack PowerControls restore individual mailboxes, folders, attachments, calendar items, or any number of duplicate or unique messages directly to your production Exchange server or any PST file.

The easy-to-use interface allows you to drag and drop mailboxes and messages from source to destination. For larger restoration or export tasks, Ontrack PowerControls features a command line interface allowing you to easily batch repetitive processes such as multiple copy and export without the need to initiate the software. Plus, Ontrack PowerControls allows you to open multiple sources and destinations including EDB and PST files simultaneously.



Featuring these and many other usage and security preferences and settings, it's easy to customise Ontrack PowerControls to fit your specific needs.

Not only is Ontrack PowerControls an invaluable recovery tool, but a powerful searching tool as well. You can easily search messages for keywords or criteria directly from an un-mounted EDB file without having to restore them to an Exchange server first.

Archived email can be searched by matching keywords, excluding keywords, dates, senders, subjects, and recipients. Ontrack PowerControls also allows you to selectively search in the Message Subject, Message Body, or Attachment File Name. Ontrack PowerControls gives you the freedom to easily search and restore email items, allowing you to slash your restore time and meet the needs and requests of all your internal clients.

Say no to the need for recovery servers and brick-level backups.

Say yes to Ontrack PowerControls today!

### Who needs Ontrack PowerControls?

Are you responsible for storage of email and backup, managing your company's LAN, WAN and firewall access points for email? Do you maintain your company's email accounts and database? Do you field the calls from users with email problems?

Ontrack PowerControls can help YOU!

## How do you benefit from Ontrack PowerControls?

### Minimise the amount of storage space and the cost required to store and archive your backups.

Ontrack PowerControls eliminates the need to backup mailboxes individually, thereby completely eliminating the backup space, cost, and time associated with performing brick-level backups.

### Greatly reduce the time required to restore an individual mailbox.

Ontrack PowerControls restores mail items from a previous full backup directly into the production Exchange server or directly into a new or existing PST file, thereby eliminating the extra steps required to separately import mail back into Exchange or Outlook.

### Virtually eliminate the time it takes to backup the information store.

Ontrack PowerControls completely eliminates the need to backup mailboxes individually. In other words, most companies today will perform a full Exchange backup as normal and then run a second process to backup "Very Important Mailboxes (VIM)" individually.

Ontrack PowerControls eliminates this second process completely.

### Minimise the time it takes to locate all emails matching specific criteria – keywords, specific user(s), subject, date.

Ontrack PowerControls has an Advanced Find feature that can search across all mailboxes in an archive EDB file, rather than searching one mailbox at a time or bringing an old backup back online for analysis.

### Cut the time it takes to backup an individual mailbox to ZERO.

Ontrack PowerControls takes zero time to do this because we've completely eliminated the need for this step!

### Ontrack PowerControls System Requirements

To connect and use Ontrack PowerControls software, you need the following hardware and software:

- Windows 2000 Server, Windows® 2000 Professional, Windows XP Home or Professional, or Windows 2003 Server
- Microsoft® Outlook 2000 or later (requirement dependant on Exchange Server version and interaction)
- Intel® Pentium® -class processor
- Required RAM: 256 MB Minimum
- 150 MB of free hard disk space for installation (more disk space will be needed for processing log files when opening and an EDB file)
- Monitor with 800x600 or higher screen resolution

**Note:** Ontrack PowerControls supports Microsoft Exchange Server 5.5, Exchange Server 2000, Exchange Server 2003, or Exchange Server 2007.

To use Ontrack PowerControls you will need access to a complete EDB file. To quickly restore a previous EDB from tape, we offer the recommendations below.

Backup Product	Version	Recommendation
Microsoft® NT Backup	All versions	(1) or (3)
Symantec Backup Exec™	All versions	(1) or (3)
VERITAS NetBackup™	Exchange 5.5	(1) or (3)
VERITAS NetBackup™	Exchange 2000 or 2003	(1) or (3)
Legato NetWorker®	All versions	(1) or (3)
Computer Associates® BrightStor™ ARCserve®	Agent for Exchange with Open File Agent	(1) or (3)
Computer Associates® BrightStor™ ARCserve®	Agent for Exchange	(1) or (3)
IBM® Tivoli® Storage Manager	All versions	(1) or (3)
Hewlett-Packard OpenView® Storage Data Protector	All versions	(1) or (3)
CommVault® Galaxy™	All versions	(1) or (3)
UltraBac	All versions	(1) or (3)
Other	All versions	(1) if MTF or BKF format (2) or (3) or (4)

- (1) Use Ontrack PowerControls Extract Wizard to restore to an alternate location that is not an Exchange Server, then use Ontrack PowerControls to read the EDB.
- (2) Use Backup Software to restore to an alternate location that is not an Exchange Server, then use Ontrack PowerControls to read the EDB.
- (3) Use Backup Software to restore to a Recovery Server (duplicate Exchange Server), then use Ontrack PowerControls to read the EDB.
- (4) If Backup Software incorporates an Exchange Server volume mirroring technology, then use Ontrack PowerControls to read the offline snapshot of the EDB.

For more information on Ontrack PowerControls, please call **0800 5 765 565** or send an e-mail to [software@ontrackpowercontrols.nl](mailto:software@ontrackpowercontrols.nl) [www.ontrackpowercontrols.nl](http://www.ontrackpowercontrols.nl)

Copyright © 2007 Kroll Ontrack Inc.  
All Rights Reserved.

All other brands and product names are trademarks or registered trademarks of their respective owners.

